

# GPS Series Master Development System

## Quick Start Reference



### 1 Remove Contents



Remove kit contents including the development board, antenna, batteries, modules and USB cable.

### 2 Set Up the Development Board



Install the four AAA batteries and the coin cell battery on the back of the board. Screw the antenna to the connector on the front of the board.

### 3 Turn on Power



Slide the Power Switch to the BAT side to turn on the board.

### 4 Turn On the OLED Display



Slide the Display Power Switch to the ON position to activate the display. The GPS data is shown on the display once the module gets a position fix.

### 5 Install the Software



Install the Windows software from the CD that is included with the kit. If already installed, skip this step.

6 Connect the Development Board



Connect the Development Board to a computer with the included cables. USB drivers are on the CD so install them if prompted by the computer. The Development Board can be powered either by battery or USB.

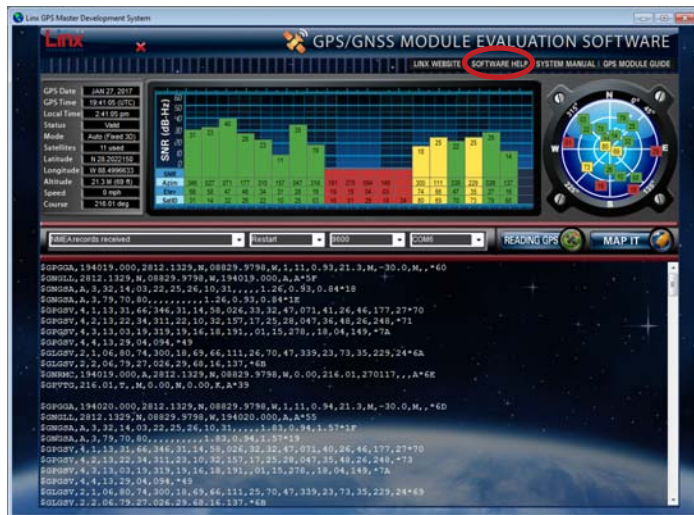
**Note:** The power should be off when connecting the USB cable. If there is data present on the USB bus during enumeration, then the board could be enumerated as a serial mouse. This prevents the software from communicating with the board and causes unusual behavior with the computer.

7 Start the Software



Start the software. Select the COM port from the drop-down menu that is associated with the Development Board. In most cases this will automatically be selected. Click the GPS Paused button to start reading the data from the module.

8 Connect to the Development Board



The software displays the information from the GPS receiver graphically as well as showing the raw messages in the text box on the bottom. More information can be found by clicking the Software Help label at the top.