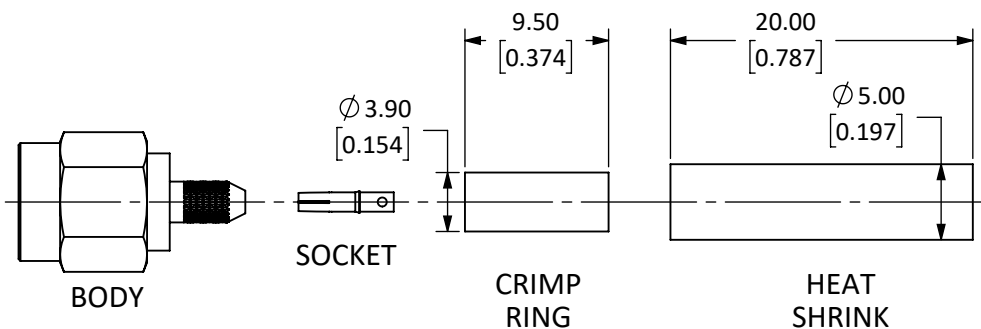
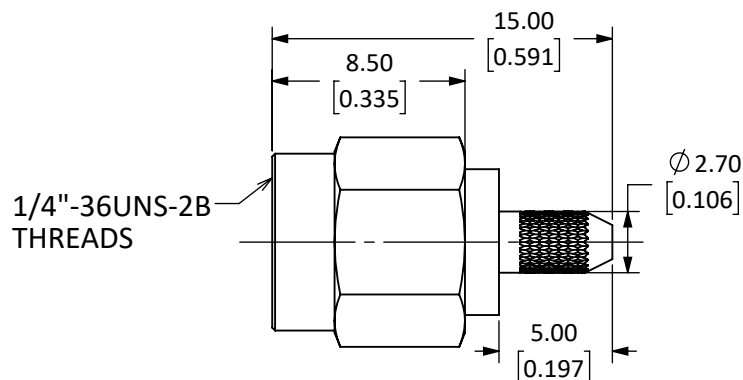
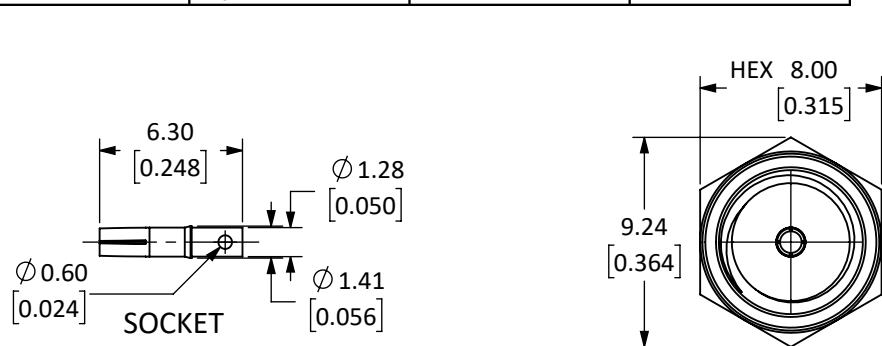


| | | | |
|--|-------------------|--------------|----------------|
| Connector: RP-SMA Plug (Female Socket) | | | |
| Termination: Cable End Crimp, RG-174 or Equivalent | | | |
| Part Number | | CONREVSMA007 | CONREVSMA007-G |
| Connector Part | Material | Finish | Finish |
| Bodies | Body: Brass | Nickel | Gold |
| | Crimp Ring: Brass | Nickel | Gold |
| Center Contact | Socket: Be Cu | Gold | Gold |
| Insulator | PTFE | - | - |
| Gasket | Silicone Rubber | - | - |
| Heat Shrink | Polyolefin | - | - |

| REVISIONS | | | |
|-----------|--|-----------|------|
| REV | DESCRIPTION | DATE | APPV |
| A | INITIAL RELEASE OF LINX INTERNAL DRAWING | 01/MAR/19 | CLL |



EXPLODED VIEW
SCALE 2 : 1

NOTES: (UNLESS OTHERWISE SPECIFIED)

- ALL DIMENSIONS ARE IN mm [INCHES].
- DIMENSIONS APPLY AFTER FINISHING.
- MANUFACTURE TO BE COMPLIANT WITH EU RoHS DIRECTIVE, USE MATERIALS THAT DO NOT CONTAIN REACH SUBSTANCES OF VERY HIGH CONCERN >1000ppm, AND USE DRC CONFLICT-FREE SOURCED MATERIALS.
- SAFETY BREAK ALL SHARP CORNERS AND EDGES 0.5 MAXIMUM.
- SEE TABLE I FOR ELECTRICAL SPECIFICATIONS. (SHEET 2)
- SEE TABLE II FOR ENVIRONMENTAL SPECIFICATIONS. (SHEET 2)
- SEE TABLE III FOR MECHANICAL SPECIFICATIONS. (SHEET 2)
- SEE PARTSLIST. "*" INDICATES FINISH TYPE.

WARNING: THIS DRAWING CONTAINS PROPRIETARY INFORMATION THAT IS THE SOLE PROPERTY OF LINX TECHNOLOGIES, AND SHALL BE TREATED AS SUCH. NO DISCLOSURE OR REPRODUCTION OF THIS DOCUMENT IS PERMITTED, IN WHOLE OR IN PART, WITHOUT THE EXPRESS WRITTEN PERMISSION OF LINX TECHNOLOGIES OR ITS DESIGNATED AGENTS.

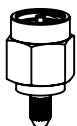
| | | |
|-----------|--|--------------------------------|
| MATERIAL: | TOLERANCES: 0.50 [.020]-5.00 [.200]= ±0.20 [.008] 5.00 [.200]-30.00 [1.200]= ±0.40 [.016] 30.0 [1.20]-120.0 [4.75]= ±0.60 [0.24] 120.0 [4.75]-315.0 [12.40]= ±1.0 [.040] | PROJECTION: |
| FINISH: | DRAWN: M. SCHULTE ENGR: D. VARATHARAJAN | DT: 21/JAN/19 DT: 08/MAR/19 |
| | ANGLES: ±1° | |

Linx

159 ORT LANE
MERLIN, OR 97532

TITLE:
**RP-SMA MALE CABLE END CRIMP
FOR RG-174 CABLE**

| | | |
|------------|-----------------------|--------------|
| SIZE | DWG. NO. | REV |
| A | CONREVSMA007-* | A |
| SCALE: 3:1 | DO NOT SCALE DRAWING | SHEET 1 OF 2 |



SCALE 1 : 1

5 TABLE I

| Electrical Data | Detail |
|---------------------------------|--|
| Impedance | 50 Ω |
| Frequency Range | 0 to 18 GHz |
| Insulation Resistance | 5 000 M Ω min. |
| Voltage Rating | 1 000 V RMS |
| Contact Resistance | Center: \leq 3.0 m Ω Outer: \leq 2.5 m Ω |
| Working Voltage | RG-174, or Equivalent \rightarrow 335 V RMS max. |
| Dielectric Withstanding Voltage | RG-174, or Equivalent \rightarrow 750 V RMS max. |

6 TABLE II

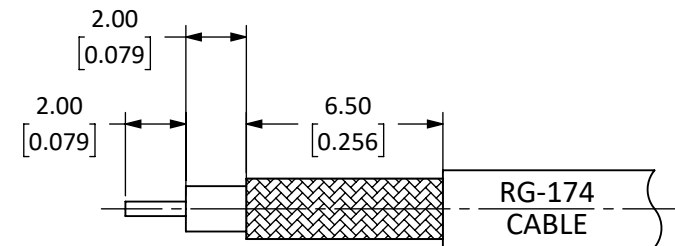
| Environmental Data | Detail |
|--------------------------|---|
| Corrosion (Salt spray) | ASTM B-117 |
| Thermal Shock | MIL-STD-202 Method 107 test condition B |
| Vibration | MIL-STD-202 Method 204 test condition D |
| Mechanical Shock | MIL-STD-202 Method 213 test condition I |
| Temperature Range | -55 $^{\circ}$ C to +155 $^{\circ}$ C |
| Environmental Compliance | RoHS |

7 TABLE III

| Mechanical Data | Detail |
|------------------------|---------------------------|
| Mounting Type | Free Hanging (In-Line) |
| Fastening Type | 1/4"-36 Threaded Coupling |
| Recommended Torque | 0.57 N·m (5.0 in·lbs) |
| Coupling Nut Retention | 60 lbs. min. |
| Connector Durability | 500 cycles min. |
| Weight | 3.1 g (0.11 oz) |

ASSEMBLY INSTRUCTIONS

- Strip the cable to the recommended dimensions.
- Slip heat shrink and crimp ring onto stripped cable.
- solder the socket to the center-conductor.
- Insert the socket, center-conductor and insulator into the body until the top of the socket is flush with the white insulation in the body.
- Wrap the braid around the tail of the body and crimp the ring with a 0.128" hex crimp tool, (or one labeled for use with RG-174 cable).
- Use heat shrink to cover crimp.



RECOMMENDED CABLE STRIPPING DIMENSIONS
CAN ALSO BE USED WITH:
RG-188 & RG-316

| SIZE | DWG. NO. | REV |
|------------|----------------------|--------------|
| A | CONREVSMA007-* | A |
| SCALE: 4:1 | DO NOT SCALE DRAWING | SHEET 2 OF 2 |