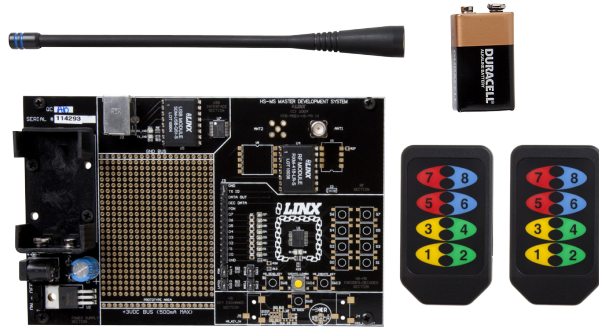


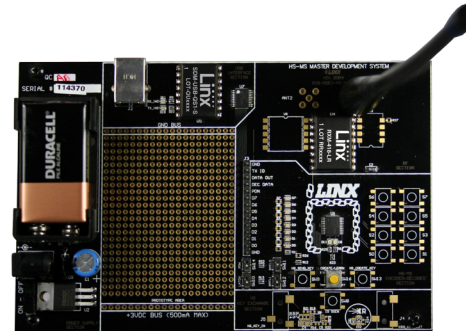
Quick Start Reference

1 Remove Contents



Remove the decoder board, transmitters, antenna and battery.

2 Set Up the Decoder Board



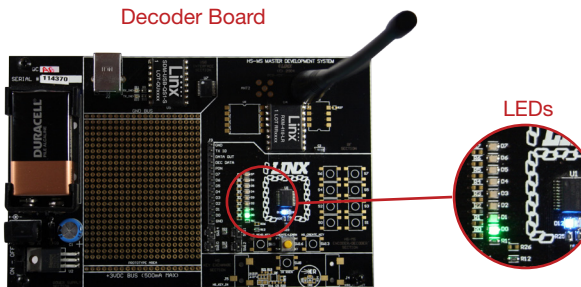
Install the antenna and battery onto the decoder board.

3 Turn On Power



Turn on the power to the board.

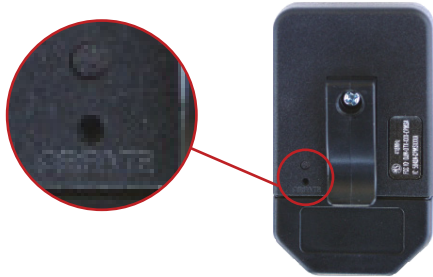
4 Press Buttons on the Transmitter to Enable Decoder Board



Changing the Transmitter Address



1 Create an Encoder Address



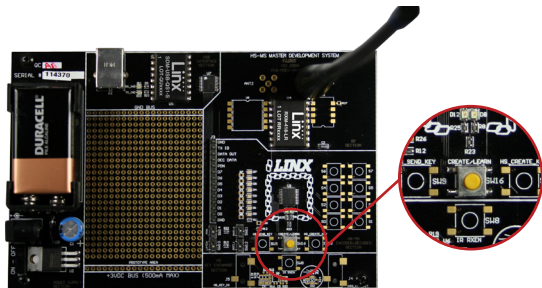
Use a paper clip to press the CREATE button on the back of the transmitter. The address is randomized for as long as the button is held. Release the button and the MODE_IND LED begins flashing.

2 Set Control Permissions



Press all of the buttons that the transmitter is authorized to use. Any button not pressed will not activate the decoder. Press the CREATE button again or let the transmitter time out.

3 Put Decoder into Learn Mode



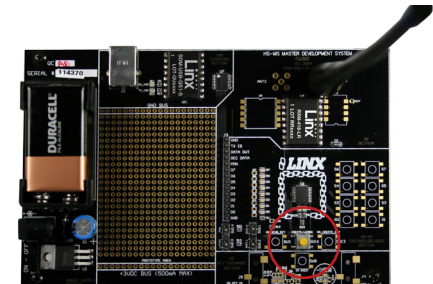
Press the LEARN button and the MODE_IND LED begins flashing.

4 Activate the Transmitter



Press any button on the transmitter to send a signal.

5 Exit Learn Mode



Press the LEARN button on the decoder again or let it time out. The new address is now learned and the system is ready for use.