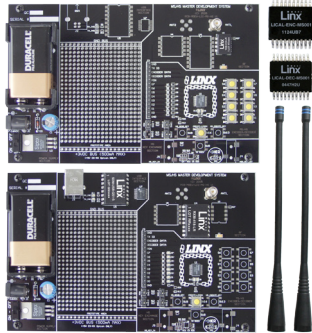


MS Series Master Development System

Quick Start Reference

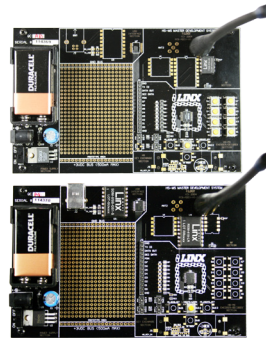


1 Remove Contents



Remove the boards, antennas and batteries.

2 Set Up Boards



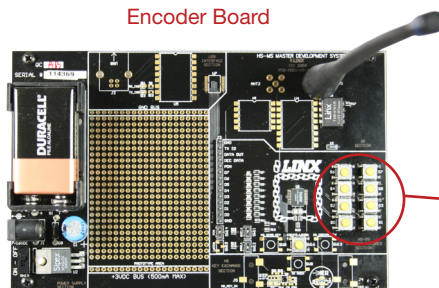
Install the antennas and batteries onto the boards.

3 Turn On Power



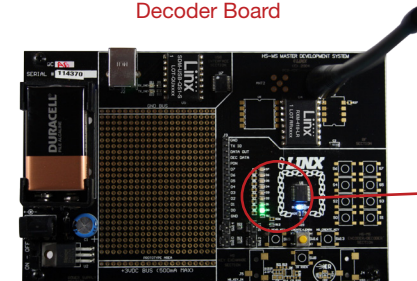
Turn on the power to each board.

4 Press Buttons on Encoder Board to Enable Decoder Board



Encoder Board

Buttons



Decoder Board

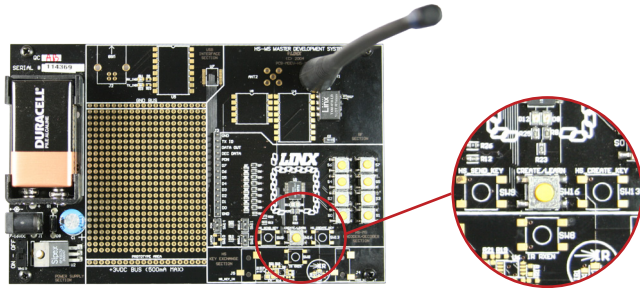
LEDs

Press the yellow buttons on the encoder board to activate the LEDs on the decoder board.

Changing the Encoder Address

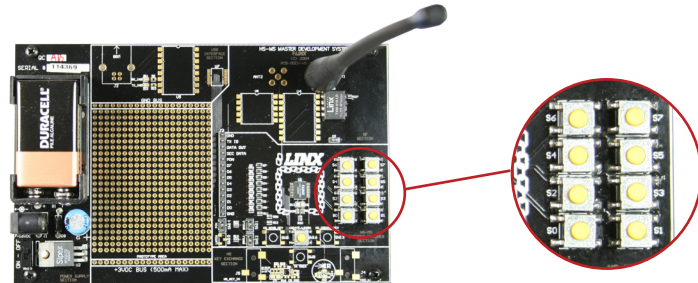


1 Create an Encoder Address



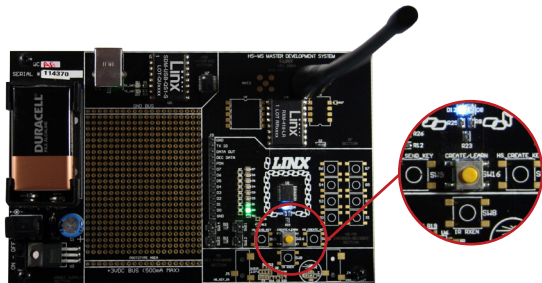
Press the CREATE button. The address is randomized for as long as the button is held. Release the button and the MODE_IND LED begins flashing.

2 Set Control Permissions



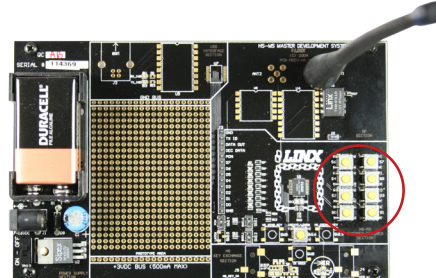
Press all of the buttons that the encoder is authorized to use. Any button not pressed will not activate the decoder. Press the CREATE button again or let the encoder time out.

3 Put Decoder into Learn Mode



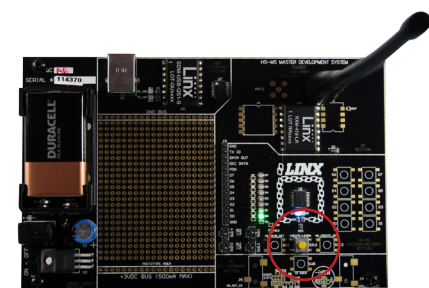
Press the LEARN button and the MODE_IND LED begins flashing.

4 Activate the Encoder



Press any button on the encoder board to send a signal.

5 Exit Learn Mode



Press the LEARN button on the decoder again or let it time out. The new address is now learned and the system is ready for use.